



**SIoux
TOOLS INC.**

2901 FLOYD BOULEVARD ■ SIOUX CITY, IOWA 51102 ■

Form A147E
Dated 5/92

Parts List for
2 Series Multi-Assembly Tools
Air Angle Screw Drivers, Nut Runners and Drills

[Serials Starting With "D", "E" & "F"]

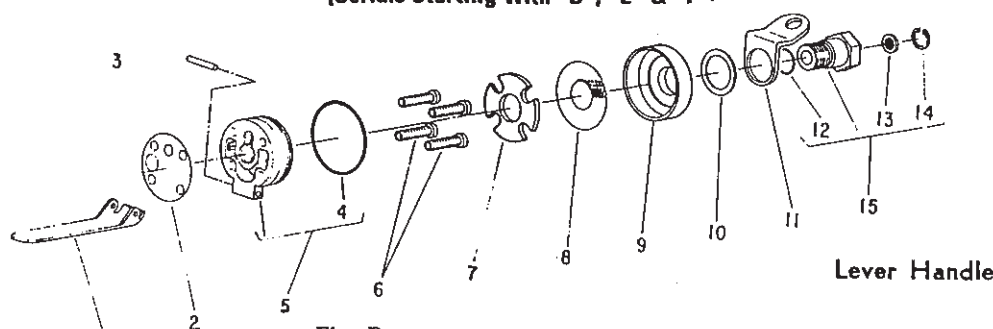


Fig- ure	Part No.	Name
1	25988	Lever—Valve
2	14734	Gasket
3	30362	Pin—Roll
4	14313	Ring—"O"
5	53945	Assy.—End Cap (Incl's. Fig. 15)
6	07140	Screw #10—24 x 7/8" (4) *

Fig- ure	Part No.	Name
7	14764	Felt
8	30470	Screen
9	14125	Deflector
10	35260	Washer
11	35192	Bail
12	14312	Ring—"O" (Ser. "E")

Fig- ure	Part No.	Name
13	30463	Screen
14	21541	Ring—Retaining
15	43154	Assy.—Adaptor & Screen (Ser. "D")
	53942	Assy.—Adaptor & Screen (Ser. "E")

Air Motors

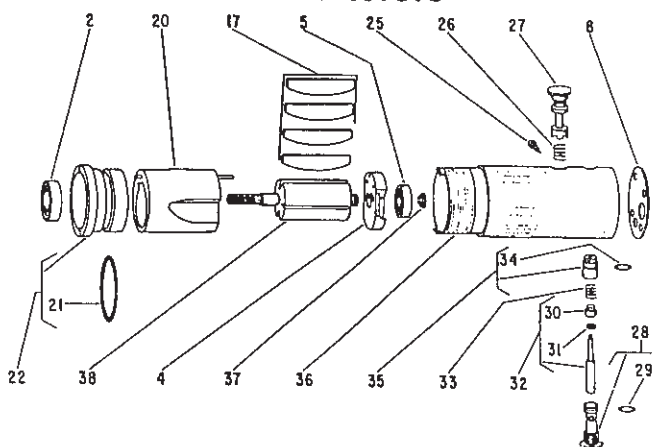


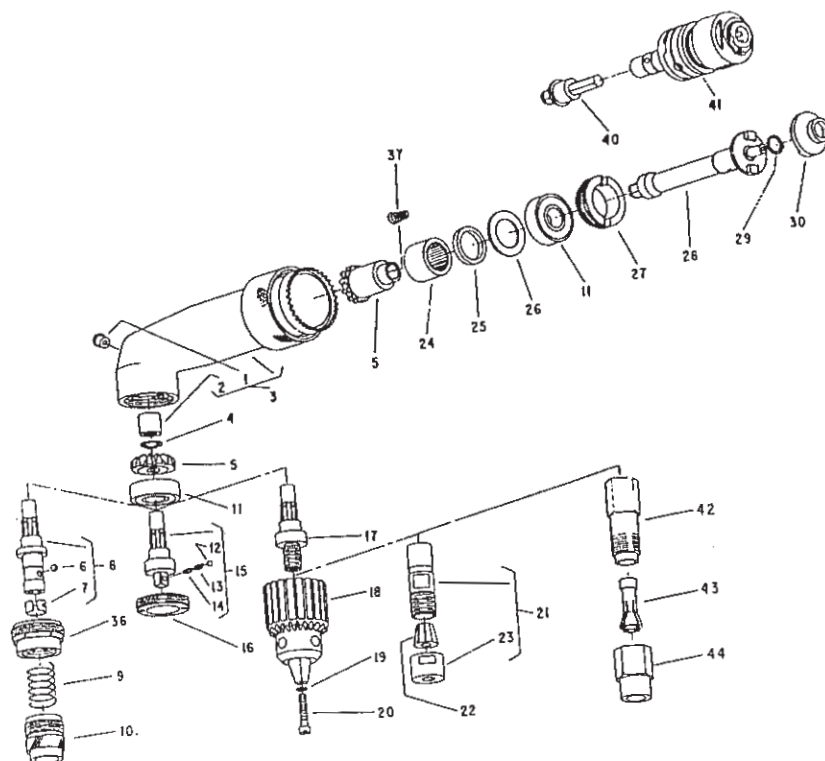
Fig- ure	Part No.	Name
2	10220	Bearing—Ball
4	13161	Plate—Upper End
5	10230	Bearing—Ball
8	14734	Gasket
17	33737	Vane—Rotor (Set of 4)
20	33738	Ass'm.—Cylinder (Reversible)
	33740	Ass'm.—Cylinder (Single Rotation, Right Hand)
21	14342	Ring—"O"
22	33741	Ass'm.—Lower End Plate
25	06502	Screw—Retaining
26	21427	Spring
27	44426	Spool—Valve (Non-Locking)
	44316	Spool—Valve (Locking)

Fig- ure	Part No.	Name
28	43508	Ass'm.—Valve Seat & "O" Ring
29	14291	Ring—"O"
30	14350	Valve
31	25957	Washer
32	43462	Ass'm.—Valve
33	21429	Spring
34	14394	Ring—"O"
35	43457	Ass'm.—Speed Control "O" Ring
36	43456	Housing (Reversible)
	44666	Housing (Single Rotation, Right Hand)
37	21491	Ring—Retaining
38	44511	Rotor (Reversible)
	44513	Rotor (Single Rotation, Right Hand)

Fig- ure	Part No.	Name
	44903	Rotor (Reversible) (1600 R.P.M. only)
	44904	Rotor (Single Rotation) (2000 R.P.M. only)

COMPLETE ASSEMBLY

43459	Ass'm.—Reversible Motor Complete
43737	Ass'm.—Reversible Motor Complete (1600 R.P.M. only)
43458	Ass'm.—Right Rotation Motor Complete
43738	Ass'm.—Right Rotation Motor Complete (2000 R.P.M. only)



Angle Tools

Fig- Part
ure No.

Name

- 1 30356 Fitting—Grease
- 2 10012 Bearing—Needle
- 3 43794 Ass'm.—Long Housing
- 43795 Ass'm.—Short Housing
- 4 21545 Ring—Retainer
- 5 19721A Ass'm.—Gear & Pinion
- 19721 Ass'm.—Gear & Pinion
(Used on Earlier Models)
- 6 10902 Ball—Steel (Screw Driver)
- 7 25854 Ring—Ball Retaining
(Screw Driver)
- 8 43562 Ass'm.—Drive Socket
(Screw Driver)
- 9 41251 Spring—Finder (Screw Driver)
- 10 54128 Retainer—Finder (Screw Driver)
- 11 10226 Bearing—Ball
- 12 34965 Plunger (1/4" Sq. Nut
Runner)
- 34666 Plunger (3/8" Sq. Nut
Runner)
- 13 21391 Spring (1/4" Sq. Nut
Runner)
- 21223 Spring (3/8" Sq.
Nut Runner)
- 14 34667 Retainer—Plunger (Nut
Runner)
- 15 43563 Spindle—Tool (1/4" Sq.
Nut Runner)
- 43564 Spindle—Tool (3/8" Sq.
Nut Runner)
- 16 44776 Retainer—Bearing (Drill)
- 17 22651 Spindle—Chuck
- 18 21077 Chuck (5/16" Cap.)
- 30002 Key—Chuck
- 21084 Chuck (1/4" Cap.)
- 30000 Key—Chuck
- 19 09712 Washer—Lock #8 (Drill)
- 20 06602 Screw—#8 (Drill)

Fig- Part
ure No.

Name

- 21 21086 Ass'm.—Collet Chuck &
Nut (Up to Ser. "F")
- 30445 Wrench—Collet (1/2"
Open End) (Up to Ser. "F")
- 30446 Wrench—Collet (5/8"
Open End) (Up to Ser. "F")
- 22 21087 Collet—198"-250" (Up to Ser. "F")
- 23 21093 Nut—Collet (Up to Ser. "F")
- 24 10049 Bearing—Needle
- 25 44780 Spacer (Use Only With 19721)
- 26 35214 Washer
- 27 44775 Retainer—Bearing
- 28 33773 Connector (1/4" Sq. &
3/8" Sq. Nut Runner—
Direct Clutch)
- 33774 Connector (Screw Driver
Direct Clutch) (Drill)
- 29 21500 Ring—Retaining
- 30 34933 Clutch—Upper
- 36 44036 Retainer—Bearing (Screw
Driver)
- 37 21401 Spring
- 40 54101 Connector (1/4" Sq. &
3/8" Sq. Nut Runner &
Screw Driver—Adjustable
Clutch)
- 41 53107 Ass'm.—Clutch (1/4" Sq.
& 3/8" Sq. Nut Runner
& Screw Driver—Adj.
Clutch—1300-1700-1900-
2500 R.P.M.)
- 42 21096 Body—Collet (Ser. "F")
- 43 44446 Collet—1/4" (Ser. "F")
- 44523 Collet—3/16" (Ser. "F")
- 44522 Collet—1/8" (Ser. "F")
- 44 21097 Nut—Collet (Ser. "F")
- 30465 Wrench (9/16" Open End) (Ser. "F")
- 30466 Wrench (11/16" Open End) (Ser. "F")

Fig. Part
ure No.

Name

- COMPLETE ASSEMBLY
- 43565 Ass'm.—Long Angle Head
(1/4" Sq. Nut Runner
Direct Clutch)
- 43567 Ass'm.—Long Angle Head
(3/8" Sq. Nut Runner—
Direct Clutch)
- 53112 Ass'm.—Long Angle Head
(Screw Driver—Adj.
Clutch—1300-1700-1900-
2500 R.P.M.)
- 43569 Ass'm.—Short Angle Head
(Screw Driver—Direct
Clutch)
- 43571 Ass'm.—Short Angle Head
(1/4" Drill)
- 43572 Ass'm.—Short Angle Head
(5/16" Drill)
- 43751 Ass'm.—Short Angle Head
(1/4" Sq. Nut Runner—
Direct Clutch)
- 43752 Ass'm.—Short Angle Head
(3/8" Sq. Nut Runner
Direct Clutch)
- 53110 Ass'm.—Long Angle Head
(1/4" Sq. Nut Runner—
Adj. Clutch—1300-1700-
1900-2500 R.P.M.)
- 53111 Ass'm.—Long Angle Head
(3/8" Sq. Nut Runner—
Adj. Clutch—1300-1700-
1900-2500 R.P.M.)

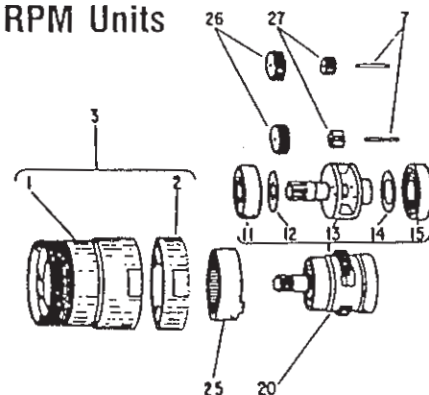


**SIoux
TOOLS INC.**

2901 FLOYD BOULEVARD ■ SIOUX CITY, IOWA 51102 ■

Single Reduction Gear Case 1600, 1900, 2000 & 2500 RPM Units

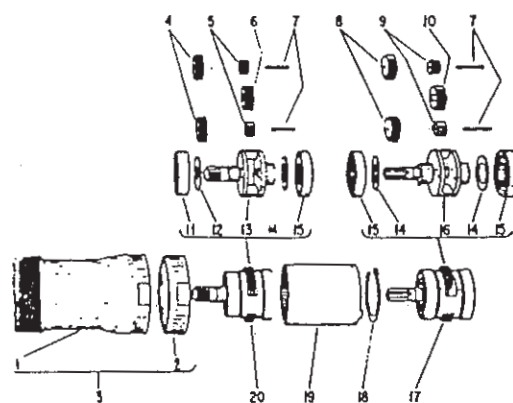
Fig- Part ure No.	Name
1 44858	Case—Gear
2 44857	Nut—Lock
3 43712	Assy.—Gear Case & Lock Nut
7 30062	Pin (2)
11 10221	Bearing—Ball
12 25987	Washer
13 64165	Carrier—Gear (1900-2500 RPM)
22622	Carrier—Gear (1600 & 2000 RPM)
14 25439	Washer
15 10203	Bearing—Ball
20 33622	Assy.—Planetary Gear (1900-2500 RPM)
43742	Assy.—Planetary Gear (1600 & 2000 RPM)
25 19160	Gear—Ring
26 19314	Gear—Idler (2) (1900 & 2500 RPM)
27 19317	Gear—Idler (2) (1600 & 2000 RPM)



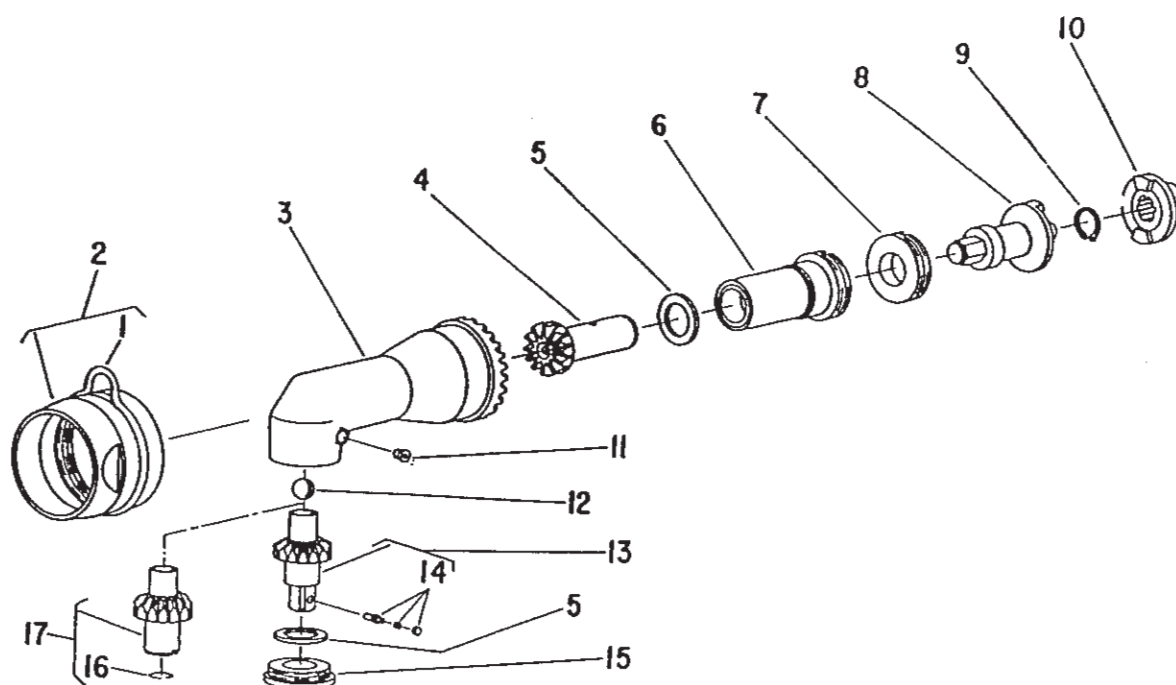
COMPLETE ASSEMBLY	
43708	Assy.—Gear Case Complete (1900-2500 RPM)
43892	Assy.—Gear Case Complete (1600 & 2000 RPM)

Double Reduction Gear Case 350, 450, 650, 850, 1300 & 1700 RPM Units

Fig- Part ure No.	Name
1 44859	Case—Gear
2 44857	Nut—Lock
3 43711	Assy.—Gear Case & Lock Nut
4 19314	Gear—Idler (2) (350-450-650- 850 RPM)
5 19315	Gear—Idler (2) (1300 & 1700 RPM)
6 19159	Gear—Pinion (1300 & 1700 RPM)
7 30062	Pin (4)
8 19314	Gear—Idler (350-450 RPM) (2)
9 19315	Gear—Idler (2) (650-850-1300- 1700 RPM)
10 19159	Gear—Pinion (650-850-1300- 1700 RPM)
11 10221	Bearing—Ball
12 25987	Washer
13 64165	Carrier—Gear (350, 450, 650 & 850 RPM)
64166	Carrier—Gear (1300 & 1700 RPM)
14 25439	Washer (3)
15 10203	Bearing—Ball (3)
16 64151	Carrier—Gear (650, 850, 1300 & 1700 RPM)
64160	Carrier—Gear (350 & 450 RPM)
17 33621	Assy.—First Planetary Gear (650-850- 1300-1700 RPM)
63386	Assy.—First Planetary Gear (350-450 RPM)
18 21510	Ring—Retainer
19 19153	Gear—Ring
20 33622	Assy.—Planetary Gear (350-450- 650-850 RPM)
33623	Assy.—Planetary Gear (1300-1700 RPM)



COMPLETE ASSEMBLY	
43706	Assy.—Gear Case Complete (650-850 RPM)
43707	Assy.—Gear Case Complete (1300-1700 RPM)
43710	Assy.—Gear Case Complete (350-450 RPM)



No. 2 Series

Right Angle Attachment — 1" Diameter Stall Drive

Fig- ure	Part No.	Name
1	41248	Bail
2	53181	Ass'm.—Lock Sleeve & Bail
3	11578	Angle Head (Includes #11)
4	19470	Pinion
5	35283	Spacer—Gear (2)
6	53171	Ass'm.—Bearing Retainer & Bushings
7	54162	Nut—Retaining
8	33774	Ass'm.—Short Connector
9	21500	Ring—Retaining
10	34933	Clutch—Upper
11	30375	Fitting—Grease
12	10322	Ball

Fig- ure	Part No.	Name
13	53173	Ass'm.—Tool Spindle ($\frac{3}{8}$ " Sq.)
	53174	Ass'm.—Tool Spindle ($\frac{1}{4}$ " Sq.)
14	33465	Ass'm.—Socket Retainer ($\frac{3}{8}$ " Sq.)
	53347	Ass'm.—Socket Retainer ($\frac{1}{4}$ " Sq.)
15	54154	Retainer—Bearing
16	21764	Ring—Wire
17	53177	Ass'm.—Tool Spindle ($\frac{1}{4}$ " Hex)

COMPLETE ASSEMBLY

53168	Angle Ass'y $\frac{3}{8}$ " Sq.
53179	Angle Ass'y. $\frac{1}{4}$ " Hex
53176	Angle Ass'y. $\frac{1}{4}$ " Sq.

Adjustable Clutch

(Part No. 53107)

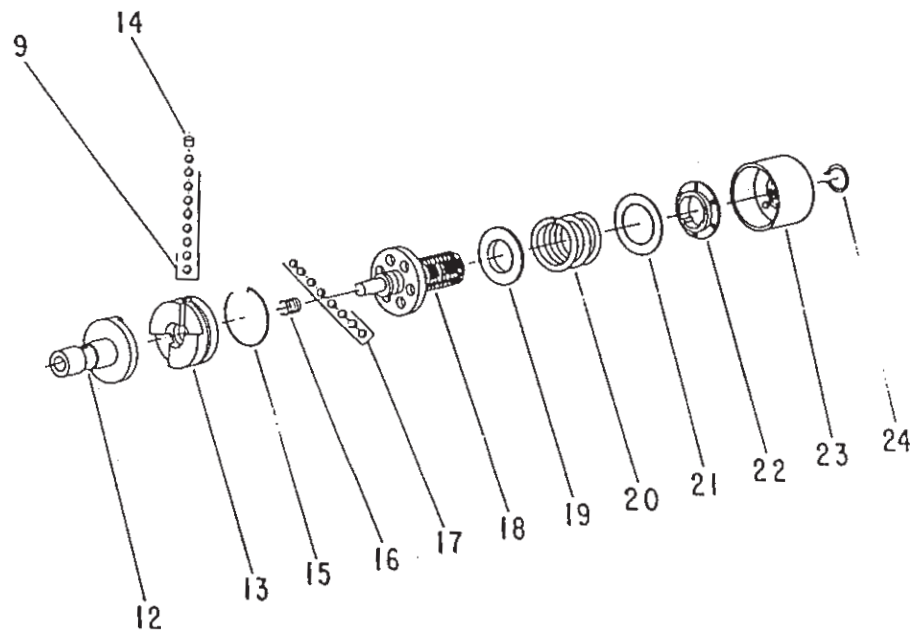


Fig- Part ure No.	Name
9 10902	Ball—Steel (9)*
12 54077	Bit Holder
13 54071	Jaw—Clutch
14 54074	Retainer—Ball
15 21762	Ring—Retaining (Includes Wire & Spiral)
16 41250	Spring
17 10291	Ball—Steel (8)*
18 22669	Spindle—Clutch
19 54072	Guide—Spring

Fig- Part ure No.	Name
20 41249	Spring—Compression (For torque settings above 25 inch pounds)
41284	Spring—Compression (Green) (For torque setting below 25 inch pounds)
21 35273	Washer
22 54073	Washer—Index
23 53095	Nut—Adjusting
24 21774	Ring—Retaining

*Order Quantity As Needed